



a pom for every performance.  
a price for every budget.

1-800-600-5076



**pom** *express*.com

1-603-964-6066 (outside USA) • All poms made in USA.

# *Just for you.....* **PERFECT POMS PRONTO!**

## **Perfect: Your delight and satisfaction is our goal!**

To help you find just the right pom for your needs, we stand by to help. If you know just what you want, we offer this simple catalog. If you need additional assistance or information, **we offer swatch samples, pom samples and personal, friendly service by phone** as well as a comprehensive **web site – [www.pomexpress.com](http://www.pomexpress.com)**

## **Poms: So many beautiful choices!**

Today's poms can verge on the spectacular! Choosing the perfect one can make your team a winner—whether competing or simply wowing the crowd! Email or mail us a picture of your uniform, costume, or material swatches—we'll be happy to make some suggestions, send back some pictures of poms, or even put together some custom samples. It's our goal to eliminate the guesswork!

## **Pronto! Prompt delivery you can count on!**

Your schedule is of utmost importance to us—we'll do everything possible to insure your poms are delivered to you when you need them!

***If you don't see what you are looking for, please give us a call!***  
***1-800-600-5076.***

## **--SOME IMPORTANT INFO--**

**Pricing:** Poms are priced by the piece, not by the pair. For **quantity discounts**, please call or visit our website.

**Color Group 1 and Color Group 2:** Our poms are manufactured in various facilities, and as such, it is sometimes impossible to combine certain colors, styles and handles. To clarify what can be put with what, we have created two color groupings (see Pages 12 & 13) and placed asterisks (\* or \*\*) in each pom section to let you know when these restrictions might apply.

### **Minimum Orders:**

#### **Color Group 1:**

##### **Full Size & Lite Size Poms: 6 pcs.**

Less than minimum will incur a \$10 service charge. You may mix and match to reach the minimum, but no less than 2 poms per style/color/handle may be ordered

**CheerBalls, Finger Poms, Hand Poms & Pex100's:** No less than 10 pcs. per style & color may be ordered.

#### **Color Group 2:**

##### **Full Size Poms, Lite Size Poms, and Cheer Balls: 6 pcs.**

Less than minimum will incur a \$10 service charge. You may mix and match poms in each category to meet the minimum. You do not need to order all the same poms.

**Glossary of Terms:** Just a few, to help you if you're mystified (as we sometimes are!)

**Flash Pom:** A pom containing 2/3rds plastic and 1/3rd metallic strands all the same width.

**Wide & Narrow Pom:** A pom containing both wide and narrow strands of plastic & metallic or all metallic.

**Glitter Pom:** A pom containing a choice of 10, 20, or 30% additional narrow metallic strands.

**Full Size Pom:** Containing a standard count of strands. (e.g.1000 ¾" wide strands or 1440 ½" strands).

**Lite Size Pom:** Containing approximately 1/2 to 1/3 fewer strands than a full size pom. Also referred to as a Youth Pom.

# INDEX

PLASTIC & “WET-LOOK” VINYL POMS (including Flash & Glitter Poms)	PAGE 3
METALLIC POMS	PAGE 4
METALLIC WIDE & NARROW POMS	PAGE 4
MIXED MATERIAL POMS	PAGE 5
SPECIALTY MATERIAL POMS HOLOGRAPHIC CRYSTAL FLUORESCENT FLUORESCENT ZEBRA	PAGE 6
STANDARD CHEERBALLS, FINGER POMS AND HANDPOMS	PAGE 7
SPECIALTY CHEERBALLS, FINGER POMS AND HANDPOMS	PAGE 8
STOCK POMS	PAGE 9
STOCK POMS	PAGE 10
DANCE STOCK POMS	PAGE 11
PEX 100 POMS & CHEERSTAR POMS	PAGE 12
COLOR GROUP ONE INFORMATION	PAGE 13
COLOR GROUP TWO INFORMATION	PAGE 14

*Catalog Pricing is good through January 2018.*

# PLASTIC & WETLOOK VINYL POMS

Including Metallic Flash & Glitter Poms

## PLASTIC POMS

\$9.00 Per Full Size Pom  
\$12.00 Per Full Size Super Wide (2") Pom  
\$7.00 Per Lite Pom (Baton, Dowel\*, Show\* or Kap Handle\*\*)

CHOOSE YOUR STRAND LENGTH:  
Full Size: 3"\*, 4", 5", 6", 7", 8", 10", 12" 15"  
Lite Size: 4", 5", 6", 7"\*

CHOOSE YOUR STRAND WIDTH:  
3/16", 1/2", 3/4", 1"\*, 2" (1" and 2" not available in Lite)



## PLASTIC AND METALLIC MIX "FLASH" POMS\*

\$13.00 Per Full Size Pom  
\$16.00 Per Full Size Super Wide (2") Pom  
\$11.00 Per Lite Pom (Baton, Dowel or Show handle only)

CHOOSE YOUR POM STYLE:  
1 or 2 Color Plastic Mix with one metallic "Flash"

CHOOSE YOUR STRAND LENGTH:  
Full Size: 3", 4", 5", 6", 7", 8" (10", 12" & 15" add \$2.00 each)  
Lite Size: 4", 5", 6", 7"

CHOOSE YOUR STRAND WIDTH:  
3/16", 1/2", 3/4", 1", 2" (1" and 2" not available in Lite)



## PLASTIC AND METALLIC MIX "WIDE & NARROW FLASH" POMS\*

1 or 2 Wide Plastics Mixed with 1 Narrow Metallic "Flash"

\$14.00 Per Full Size Wide & Narrow Pom  
\$12.00 Per Lite Wide & Narrow Pom (Baton, Dowel or Show handle only)

CHOOSE YOUR STRAND LENGTH:  
Full Size: 3", 4", 5", 6", 7", 8"  
(10", 12" & 15" add \$2.00 each)

[www.pomexpress.com](http://www.pomexpress.com)

## WETLOOK VINYL POMS\*\*

PLASTIC WITH EXTREME SHINE

\$9.00 Per Full Size Pom  
\$7.00 Per Lite Pom (Kap or Baton Handle)

CHOOSE YOUR STRAND LENGTH:  
Full Size: 4", 5", 6", 7", 8", 10", 13"  
Lite Size: 4", 5", 6"

CHOOSE YOUR STRAND WIDTH:  
3/16", 3/4"



## PLASTIC OR WETLOOK VINYL "GLITTER" POMS\*\*

\$11.00 Per Full Size Pom with Single Glitter  
\$13.00 Per Full Size Pom with Double Glitter  
\$8.00 Per Lite Pom with Single Glitter  
\$10.00 Per Lite Pom with Double Glitter  
(Lite Poms available with Kap & Baton Handle only)

CHOOSE YOUR POM STYLE:  
1, 2 or 3 Color Plastic or Wetlook Vinyl Mix with one metallic "Glitter"

1, 2 or 3 Color Plastic or Wetlook Vinyl Mix with double metallic "Glitter"

CHOOSE YOUR STRAND LENGTH:  
Full Size: 4", 5", 6", 7", 8", 10", 13"  
Lite Size: 4", 5", 6"

CHOOSE YOUR STRAND WIDTH:  
3/16", 3/4"



# METALLIC POMS

## METALLIC POMS

\$18.00 Per Full Size Pom

\$22.00 Per Full Size Super Wide 2" Pom

\$12.00 Per Lite Pom (Baton, Dowel\*, Show\* or Kap Handle\*\*)

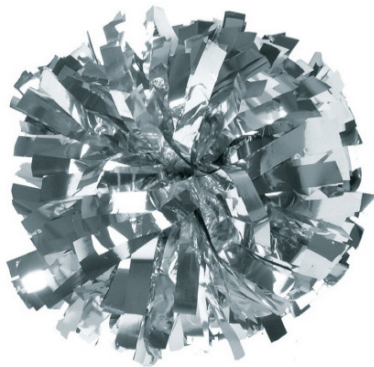
CHOOSE YOUR STRAND LENGTH:

Full Size: 3"\* , 4" , 5" , 6" , 7" , 8"

Lite Size: 4" , 5" , 6" , 7"\*

CHOOSE YOUR STRAND WIDTH:

3/16" , 1/2" , 3/4" , 1"\* , 2" (1" and 2" not available in Lite)



## METALLIC WIDE & NARROW POMS\*

\$19.00 Per Full Size Size Pom

\$13.00 Per Lite Pom (Baton, Dowel or Show handle only)

CHOOSE YOUR STRAND COMBINATION:

One Metallic Wide, one Metallic Narrow

One Metallic Wide, two Metallics Narrow

Two Metallics Wide, one Metallic Narrow

CHOOSE YOUR STRAND LENGTH:

Full Size: 3"\* , 4" , 5" , 6" , 7" , 8"

**\* Available only with GROUP 1 COLORS**

**\*\* Available only with GROUP 2 COLORS**

# MIXED MATERIAL POMS

**\*\*The poms on this page are Available only with GROUP 2 COLORS**

## PLASTIC & METALLIC MIXED POMS

50% PLASTIC/50% METALLIC

\$16.00 Per Full Size Pom (4", 5", 6", 7" 8")

\$21.00 Per Full Size Pom (10", 12", 15")



## WETLOOK VINYL & METALLIC MIXED POMS

PLASTIC WITH EXTREME SHINE

50% VINYL/50% METALLIC

\$16.00 Per Full Size Pom (4", 5", 6", 7" 8")

\$21.00 Per Full Size Pom (10", 12", 15")

STRAND WIDTH: 3/4" Wide Only



## PLASTIC AND HOLOGRAPHIC MIX POMS

50% PLASTIC/50% HOLOGRAPHIC

\$19.00 Per Full Size Pom (4", 5", 6", 7" 8")

\$23.00 Per Full Size Pom (10", 12", 15")

STRAND WIDTH: 3/4" Wide Only



## WETLOOK VINYL AND HOLOGRAPHIC MIX POMS

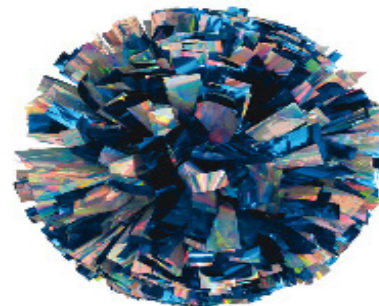
PLASTIC WITH EXTREME SHINE

50% VINYL/50% HOLOGRAPHIC

\$19.00 Per Full Size Pom (4", 5", 6", 7" 8")

\$23.00 Per Full Size Pom (10", 12", 15")

STRAND WIDTH: 3/4" Wide Only



## METALLIC AND HOLOGRAPHIC MIX POMS

50% METALLIC/50% HOLOGRAPHIC

\$22.00 Per Full Size Pom (4", 5", 6", 7" 8")

\$25.00 Per Full Size Pom (10", 12", 15")

STRAND WIDTH: 3/4" Wide Only

[www.pomexpress.com](http://www.pomexpress.com)



# SPECIALTY MATERIALS

**-ALL HOLOGRAPHIC POMS-  
-HOLOGRAPHIC & METALLIC MIX POMS-  
-FLUORESCENT &  
FLUORESCENT ZEBRA POMS-**



\$24.00 Per Ultra Full Size Pom\*  
\$25.00 Per Ultra Full Size Wide & Narrow Pom\*  
\$25.00 Per Full Size Super Wide (2") Pom  
\$21.00 Per Full Size Wide & Narrow Pom  
\$20.00 Per Full Size Pom  
\$18.00 Per Lite Wide & Narrow Pom  
\$16.00 Per Lite Pom  
(Lite poms available with Baton, Dowel\*, Show\* or Kap Handle\*\* only)

YOUR CHOICE OF UP TO 3 COLORS OF HOLOGRAPHICS AND METALLICS.  
PLEASE REFER TO COLOR CHARTS ON PAGES 13 & 14.

FOR WIDE AND NARROW POMS, CHOOSE ONE OF THE FOLLOWING:  
STRAND COMBINATIONS:  
One Metallic Wide, one Metallic Narrow  
One Metallic Wide, two Metallics Narrow  
Two Metallics Wide, one Metallic Narrow

***Combinations with Specialty Material are almost endless, so please call us if you don't see what you are looking for!***

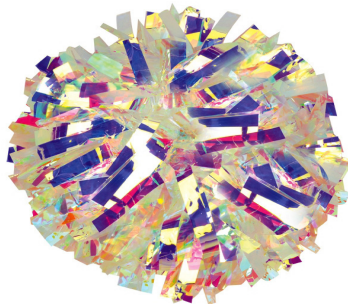
CHOOSE YOUR STRAND LENGTH:  
Full & Ultra size: 3", 4", 5", 6", 7", 8" (10", 12" 15" add \$4.00 each)  
Lite Size: 4", 5", 6", 7"\*



CHOOSE YOUR STRAND WIDTH:  
3/16", 1/2", 3/4", 1"\*, 2" (1" and 2" not available in Lite)

## LASER POMS

**with HOLOGRAPHIC and/or METALLIC**



## LASER

\$38.00 Per Ultra Full Size Pom  
\$38.00 Per Super Wide 2" Wide Pom  
\$34.00 Per Full Size Pom  
\$22.00 Per Lite Pom  
(Lite poms available with Baton, Dowel\*, Show\* or Kap Handle\*\* only)

\$38.00 Per Ultra Dance Pom  
\$39.00 Per U Itra Dance Full Size Wide & Narrow Pom  
\$38.00 Per Super Wide 2" Wide Poms  
\$30.00 Per Full Size Pom  
\$22.00 Per Lite Pom\* (Baton, Dowel or Show handle only)  
\$23.00 Per Lite Wide & Narrow Pom\* (Baton, Dowel or Show handle only)

CHOOSE YOUR STRAND LENGTH:  
Full & Ultra size: 3", 4", 5", 6", 7", 8"  
Lite Size: 4", 5", 6", 7"

YOUR CHOICE OF UP TO 3 COLORS OF LASER, HOLOGRAPHICS AND METALLICS. PLEASE REFER TO COLOR CHARTS ON PAGES 13 & 14.

CHOOSE YOUR STRAND WIDTH:  
3/16", 1/2", 3/4", 1", 2" (1" and 2" not available in Lite)

FOR WIDE AND NARROW POMS, CHOOSE ONE OF THE FOLLOWING:  
STRAND COMBINATIONS:  
One Metallic Wide, one Metallic Narrow  
One Metallic Wide, two Metallics Narrow  
Two Metallics Wide, one Metallic Narrow

CHOOSE YOUR STRAND LENGTH:  
Full & Ultra size: 3"\*, 4", 5", 6", 7", 8"  
Lite Size: 4", 5", 6", 7"\*

CHOOSE YOUR STRAND WIDTH:  
3/16", 1/2", 3/4", 1"\*, 2" (1" and 2" not available in Lite)

**\* Available only with GROUP 1 COLORS**  
**\*\* Available only with GROUP 2 COLORS**

# CHEERBALLS / HAND & FINGER

A Cheer Ball is a pom that doesn't have a traditional handle. It is simply strands that are clipped together with a heavy wire clip. The cheerballs are pre-fluffed and the strands form a nice round ball. They are lightweight and easy to use and contain half the strands of a full size pom. They are quick and easy to pick up by simply grabbing the center of the poms.

## STANDARD CHEERBALLS

### 1, 2 or 3 Plastic Colors

\$5.50 each

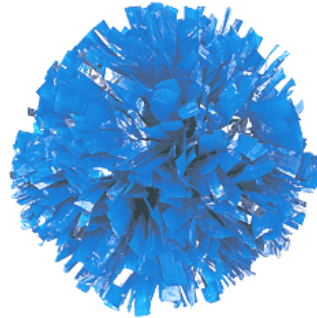
3", 4", 5", 6", 7", 8", 9"\* lengths  
3/4", 1/2"\* or 3/16" widths



### 1, 2 or 3 Wetlook Vinyl Color:

\$ 5.50 each

4", 5", 6", 7", 8" lengths  
3/4" or 3/16" widths



### 1 Plastic w/1 or 2 Metallics\*

\$8.50 each

3", 4" 5", 6", 7", 8", 9" lengths  
3/4", 1/2" or 3/16" widths

**MAKE IT A HAND POM  
OR FINGER POM!**  
Choose from 2 different types  
of elastics!  
"Hand Pom" elastic and adjustable "Finger Pom" elastic  
(recommended). Available only in Group 1 colors!  
Add \$.50 per piece.



### 1, 2 or 3 Metallic Colors

\$9.50 each

3", 4", 5", 6", 7", 8", 9"\* lengths  
3/4", 1/2"\* or 3/16" widths

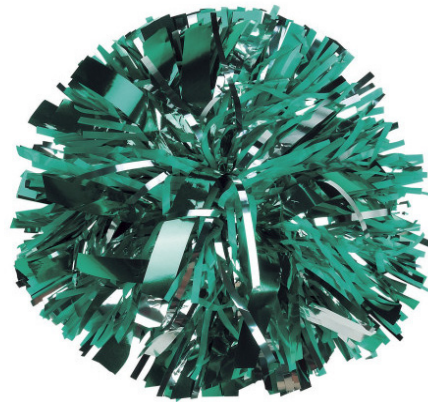
## GLITTER CHEERBALLS

### 1, 2 or 3 Metallic Colors w/1 or 2 Metallic "Glitter"\*\*\*

\$10.50 each with Single Glitter

\$12.50 each with Double Glitter

4", 5", 6", 7", 8" lengths  
3/4" or 3/16" widths



### 1, 2 or 3 Wetlook Vinyl Colors w/1 or 2 Metallic "Glitter"\*\*\*

\$7.50 each with Single Glitter

\$9.00 each with Double Glitter

4", 5", 6", 7", 8" lengths

## WIDE & NARROW CHEERBALLS

### 1 3/4" Plastic w/1 or 2 Narrow Metallics\*

\$9.50 each

3", 4", 5" 6", 7", 8", 9" lengths

\* Available only with **GROUP 1 COLORS**  
\*\* Available only with **GROUP 2 COLORS**

### 1, 2 or 3 Metallic Colors

\$10.50 each

3", 4", 5", 6", 7", 8", 9"\* lengths

## CHOOSE ONE OF THE FOLLOWING COMBINATIONS:

- One Metallic Wide, one Metallic Narrow
  - One Metallic Wide, two Metallics Narrow
  - Two Metallics Wide, one Metallic Narrow
- [www.pomexpress.com](http://www.pomexpress.com)

**Minimum Order:**  
Cheerballs from **GROUP 1 Colors** have a minimum  
order of **10 pieces**  
per color combination. No orders accepted for less  
than **10 pieces.**



# SPECIALTY CHEERBALLS / HAND & FINGER

**-ALL HOLOGRAPHIC-  
-HOLOGRAPHIC & METALLIC MIX-  
-STARS & STRIPES, FLUORESCENT &  
FLUORESCENT ZEBRA-**

\$13.50 each

\$14.50 each Wide & Narrow Mixed



## **LASER & HOLOGRAPHIC\***

\$18.00 each

\$19.00 each Wide & Narrow Mixed



## **SOLID LASER\***

\$21.00 each

\$22.00 each Wide & Narrow Mixed

FOR ANY OF THE POMBS ABOVE THE FOLLOWING APPLIES:

LENGTHS: 3", 4", 5", 6", 7", 8", 9"

WIDTHS: 3/4", 1/2" or 3/16"

WINE & NARROW WIDTHS: 3/4" + 3/16" ONLY

One color Wide, one color Narrow

One color Wide, two colors Narrow

Two colors Wide, one color Narrow

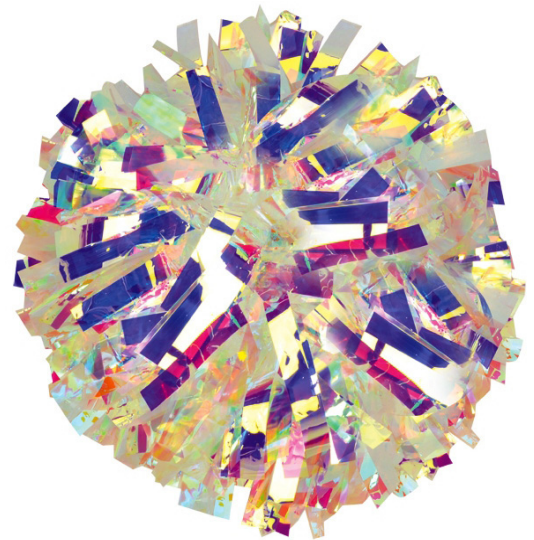
YOUR CHOICE OF UP TO 3 COLORS OF HOLOGRAPHICS,  
METALLICS & LASER. PLEASE REFER TO GROUP 1 COLOR  
CHARTS (ONLY) ON PAGE 13

## **MAKE IT A HAND POM OR FINGER POM!**

Choose from 2 different types  
of elastics!

"Hand Pom" elastic and adjustable "Finger Pom" elastic  
(recommended). Available only in Group 1 colors!

Add \$.50 per piece.



### **Minimum Order:**

Specialty Cheerballs have a minimum order of 10 pieces per color  
combination. No orders accepted for less than 10 pieces.

# STOCK POMS

Ships in 1-2 business days!

## PLASTIC STOCK POMS

\$8.00 Per Full Size Pom (6" x 3/4" or 5" x 1" Baton Handle)

\$7.00 Per Lite Size Pom (6" x 3/4", Kap Handle\*\* or 6" x 1/2", Dowel Handle\*)

### YOUR CHOICE OF:

1 Color Plastic - Red, Cardinal\*\*, Crimson\*\*, Navy, Bright Blue\*\*, Columbia Blue, Royal Blue, Denver Orange\*\*, Tenn. Orange\*\*, Texas Orange\*\*, Orange, Kelly Green, Forest Green, Aqua Green, Bright Gold, Old Gold\*\*, Vegas Gold\*\*, Light Purple\*\*, Dark Purple, Maroon, Gray\*\*, Brown\*\*, Teal\*\*, Black, White, Neon Green\*\*, Neon Pink, Neon Yellow\*\* & Awareness Pink\*\*.

### YOUR CHOICE OF (5" x 1")\*:

Black, Bright Gold, Neon Pink, Orange, Red, Royal and White

2 Color Plastic Mix- Red/White, Maroon/White, Columbia/White, Royal/White, Navy/White, Kelly/White, Dark Purple/White, Black/White, Black/Bright Gold, Royal/Bright Gold, Kelly/Bright Gold\*\*, Red/Black, Red/Royal\*\*, Bright Gold/White\*\*, Black/Orange, Forest Green/White, Navy Blue/Orange\*\*, Orange/White, Neon Pink/White, Purple/Bright Gold

### YOUR CHOICE OF (5" x 1")\*:

Black/Red, Br Gold/Navy, White/Navy, White/Neon Pink, White/Red, White/Royal

3 Color Plastic Mix- Black-Bright Gold-White, Black-Kelly Green-White\*\*, Black-Scarlet Red-White\*\*, Black-Orange-White\*\*, Maroon-Bright Gold-White, Navy-Bright Gold-White, Navy-Columbia Blue-White\*\*, Navy-Scarlet Red-White, Purple-Bright Gold-White\*\*, Royal Blue-Bright Gold-White & Royal Blue-Scarlet Red-White.



## "FLASH" STOCK POMS\* (Flash Color is Silver)

\$13.00 Per Full Size Size Pom (6" x 3/4" or 5" x 1", Baton Handle\*)

### YOUR CHOICE OF:

Black Plastic, Royal Plastic, Red Plastic, Neon Pink, Navy Blue, Purple, Dark Green, White

### YOUR CHOICE OF 5" x 1":

Black Plastic, Royal Plastic, Red Plastic, Neon Pink, Navy Blue, White



## METALLIC STOCK POMS

\$16.00 Per Full Size Size Pom (6" x 3/4" or 5" x 1"\* , Baton Handle)

\$11.00 Per Lite Size Pom (6" x 3/4", Kap Handle\*\* or 6" x 1/2", Dowel Handle\*)

### YOUR CHOICE OF 1 SOLID COLOR METALLIC:

Metallic Gold, Silver, Columbia Blue (matte)\*\* , Magenta\*\* , Hot Pink\* , Red, Royal Blue, Navy Blue, Kelly Green, Forest Green, Orange, Purple, Maroon, Teal\*\* , Black, White non-metallized film)\*\* and Bright Gold (non-metallized film)\*\*

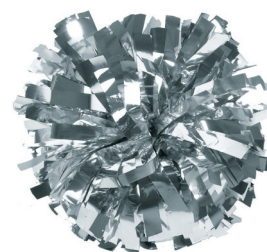
### YOUR CHOICE OF 1 SOLID COLOR METALLIC, 5" x 1"\*:

Gold, Silver, Red, Black, Royal Blue, Maroon, Navy Blue, Purple, Hot Pink

### YOUR CHOICE OF 2 COLOR METALLIC:\*

\$16.00 Per Full Size Size Pom (6" x 3/4", Baton Handle)

Black/Silver, Red/Silver, Hot Pink/Silver, Royal/Silver, Navy/Silver



# STOCK POMS

## PLASTIC WITH SILVER METALLIC GLITTER\*\*

\$10.00 Per Full Size Pom (6" x 3/4" + 3/16", Baton Handle)

### YOUR CHOICE OF:

Scarlet Red, Cardinal Red, Crimson Red, Tennessee Orange, Denver Orange, Texas Orange, Orange, Bright Gold, Old Gold, Vegas Gold, Columbia Blue, Bright Blue, Royal Blue, Navy Blue, Aqua Green, Teal, Kelly Green, Forest Green, Light Purple, Dark Purple, Maroon, Brown, Grey, White, Black, Neon Yellow, Neon Green & Neon Pink



## DOUBLE SILVER GLITTER STOCK POMS\*

\$12.00 Per Full Size Size Pom (5" x 3/4", Baton Handle\*)

\$9.00 Per Lite Size Pom (6" x 1/2", Dowel Handle\*)

### YOUR CHOICE OF:

Black, Dark Green, Gold, Kelly, Lt blue (Columbia Blue), Maroon, Navy, Orange, Purple, Red, Royal, White, Neon Pink



## METALLIC & HOLOGRAPHIC MIX STOCK POMS\*

\$20.00 Per Lite Pom (5" x 3/4", Baton Handle)

### YOUR CHOICE OF:

Solid Silver Holographic  
Solid Gold Holographic  
Black Metallic & Silver Holographic  
Royal Metallic & Silver Holographic  
Red Metallic & Silver Holographic



\* Available only with GROUP 1 COLORS  
\*\* Available only with GROUP 2 COLORS

# DANCE STOCK POMS

## PLASTIC & SILVER METALLIC "FLASH" POM

2/3 Plastic, 1/3 Metallic

\$13.00 Per Full Size Size Pom (4" x 3/4", Baton Handle\*)

### YOUR CHOICE OF:

Black Plastic, Royal Plastic, Red Plastic, Neon Pink, Navy Blue, Purple, Dark Green, White



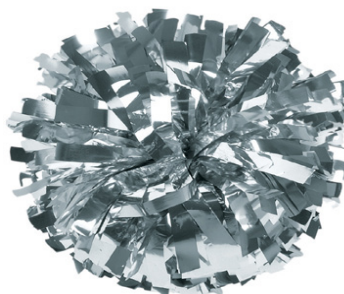
## METALLIC DANCE STOCK POM

\$16.00 Per Full Size Size Pom (4" x 3/4", Baton Handle\*)

### YOUR CHOICE OF:

Available in Solid Colors: Metallic Gold, Silver, Red, Black, Royal Blue, Dark Green, Kelly Green, Maroon, Navy Blue, Orange, Purple, Hot Pink

Available in Two Color Mixes: Black/Silver, Red/Silver, Royal/Silver, Navy/Silver



# PEX 100 & CHEERSTAR POMS

*A Pom Express Exclusive!*

## THE PEX 100 YOUTH POM

Available only in 5" x 1/2" size with mini dowel handle (4" x 3/4") and an elastic loop.

PEX 100's are only available in the GROUP 1 COLORS  
 Minimum Order:  
 PEX 100's have a minimum order of 10 pieces per color/style.

**1, 2 or 3**  
**Color Plastic**  
 \$5.50 Per Pom



**1 or 2 Plastic**  
**w/Metallic Flash**  
 \$7.50 Per Pom



**1, 2 or 3**  
**Color Metallic**  
 \$10.50 Per Pom



## CHEERSTAR POMS

Item Qty.	10-24	25-49	50-99	100+
Cheerstar, 1250 Streamers	3.15	2.59	2.39	2.29
Cheerstar, 1750 Streamers	3.79	3.25	3.05	2.95

### IMPRINTING:

Price includes a one-color/one-side imprint.  
 For each additional imprint color, add \$.20 per piece.

### Additional imprinting costs:

Set-up charge: \$35 per imprint color  
 (Reorders: \$12.50 per imprint color)  
 Artwork Charge: \$31.25 minimum if camera ready artwork is not provided. (Please call if you have any questions regarding the proper artwork requirements. 1-800-600-5076)

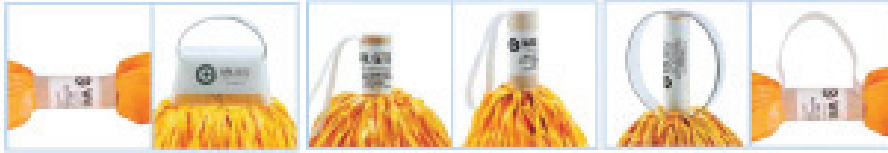


- Cheerstars available in Group 2 Colors only
- Minimum order per color (unprinted): 10 pieces
- Minimum order per color (with imprint): 100 pieces



# COLOR GROUP 1 INFORMATION

Please see inside coverage for minimum order requirements and other valuable information!



B - Baton    C - Crown    SH - Show    D - Dowel    L - Loop    EB - Baton

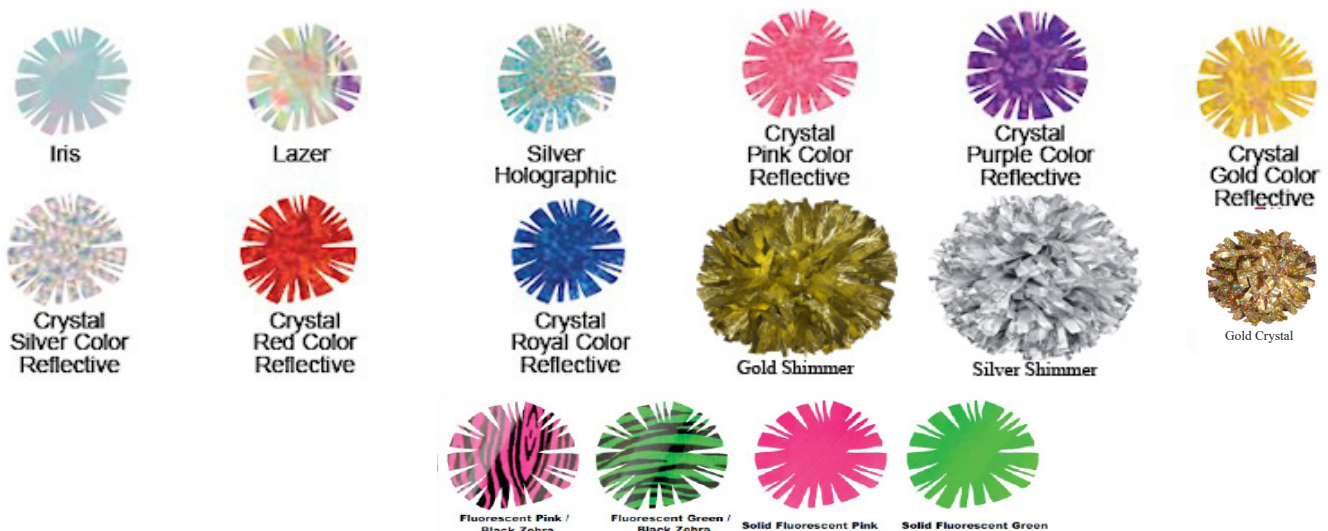
## PLASTIC COLORS



## METALLIC COLORS



## SPECIALTY COLORS



# COLOR GROUP 2 INFORMATION

Please see inside coverage for minimum order requirements and other valuable information!



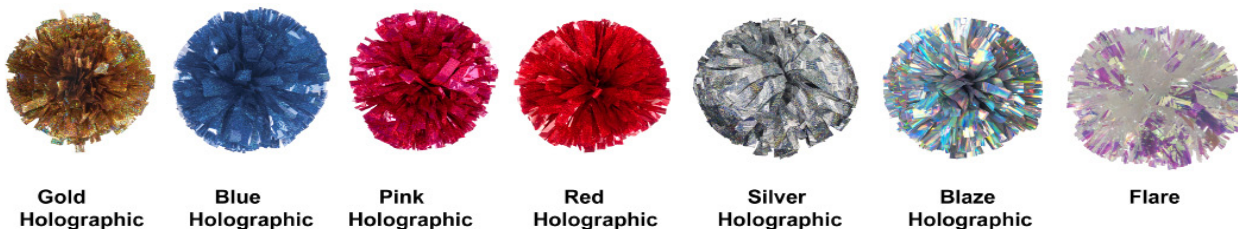
## PLASTIC & "WET-LOOK" VINYL COLORS



## METALLIC COLORS



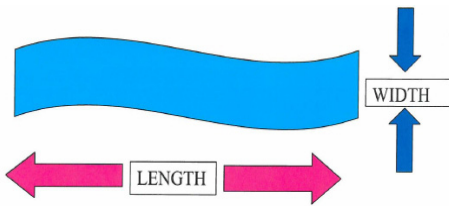
## SPECIALTY COLORS



# Anatomy of a Pom

The construction of a pom is very simple. A pom consists of two main parts - the strands and the handle. The handle helps define the shape of the pom, the strands are what give the pom its unique look.

Poms are all measured the same way - by the length and the width of their strands--for instance 6" (long) x 3/4" (wide) or 12" (long) x 3/16" wide and so on. Please see the illustration below.



**WIDTH MEASUREMENT** is determined by measuring across the strand. (A general rule regarding the the width of the strands is: The narrower the strand, the "swishier" the pom.) Available strand widths range from Narrow Streamer Poms - 3/16"; to Wide Show Poms - 7/16", 1/2", 3/4" or 1"; to Super Wide Show Poms - 2".

**LENGTH MEASUREMENT** is simply the measurement between where the strand is attached to the handle outward to the end of the strand. Cheerballs, which have no handle, are simply measured from the center of the pom outward to determine the strand length. The longer the strand length, the less round the pom shape becomes. (The most popular lengths of a baton handle pom are 4-7", while poms with other handles range from 5" on up to 15".)

With a baton handle as shown below, the strand is measured from inside the baton out to the edge of the strand.



With all other handles, measure the strands from handle out to the strand edge.



Still not sure? Give us a call, we are always happy to help!

**1-800-600-5076**

**Outside USA: 603-964-6066**



For sizing purposes---  
A CHEERBALL is approximately 1.5" smaller than its pom equivalent.  
For example, a 6" cheerball is equivalent to a 5" baton handle pom in diameter.